

DOING GOOD: METRO AFFORDABLE HOUSING



Willakenzie Crossings

Sanipac thanks Metro Affordable Housing for Doing Good in Our Community!

Metro Affordable Housing Corporation provides **quality affordable housing communities** and support services that promote opportunities for personal growth and economic independence.



PO BOX 10928
Eugene, OR 97440
(541) 736-3600

**Residential
Edition**



Printed on
Recycled paper

Hardworking people should be able to have affordable housing and still have enough money for groceries and other basic necessities.

Housing gives people an opportunity to build better lives. Children deserve an opportunity to succeed in school and life, which is tied to having a stable home.

Collaborating is a strength that best defines Metro. They collaborate with over 20 non-profit and social service agencies to provide services to limited income residents in Lane County.

In 2012 Metro had over 18,000 visits to community centers to participate in programs that empower residents with on-site programs focused on **Food and Nutrition, Adult Education, and Youth and Community Building**.

The annual "Trash Art" program, part of a monthly Kids Club program, is a collaboration between Metro, Sanipac, and MECCA (Material Exchange Center for the Community Arts). Together, we teach youth about recycling methods and make fun and scary masks with recycled materials.

Donations are always needed to support affordable housing and programs. Please consider making a donation TODAY. To learn more, visit our website at www.metroaffordablehousing.org or call us at 541-683-1751.



Green Leaf Village

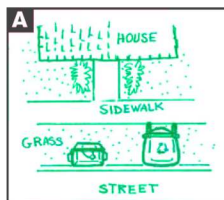
**It's all of us working together
that makes this a great place to live!**



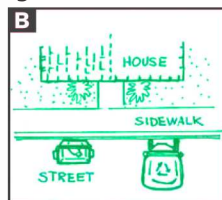
- ★ vacuum dust,
- ★ kitty litter,
- ★ sawdust,
- ★ animal waste,
- ★ packing peanuts
- ★ shredded paper

Hints From Your Hauler: CART PLACEMENT

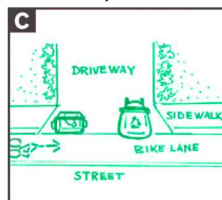
1st Option--If there is a grass strip between the curb and sidewalk place your carts and blue box on the grass next to the curb.



2nd Option--If the sidewalk is directly next to the street, place the carts and blue box in the street with the wheels against the curb.



3rd Option--If placing the equipment in the street blocks a bike lane, place the equipment on the apron of your driveway.



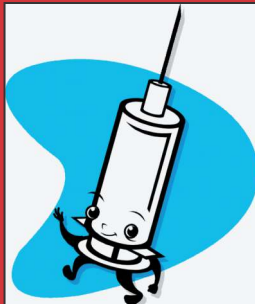
COMMINGLE RECYCLE INSTRUCTIONS:

All Recycling Must Be CLEAN

INCLUDE ONLY THE FOLLOWING ITEMS:

- **Cardboard** - must be flat
- **Paper** - mail, newspaper, magazines, phone books, paper bags, wrapping paper, computer paper, colored paper
- **SHREDDED PAPER** - must be contained in a paper bag with the top rolled closed
- **Plastic** - jugs, tubs & bottles only - NO LIDS
- **Metal** - food and beverage cans (NO UNATTACHED LIDS) & clean aluminum foil crumpled into a ball no smaller than a fist

Sharps NEVER belong in your recycling or garbage carts!



Call 541-736-3600
ext. 0 for proper disposal information

Your **BLUE BOX** is for **CLEAN** and **UNBROKEN GLASS ONLY**

"Glass recycling is not available in all of our service areas"



Haul-i-days

If your pick up day falls on or following one of these holidays, your pick up will be one day later ending with Friday's pick up being done on Saturday.

New Years Day **Labor Day**
Memorial Day **Thanksgiving Day**
4th July **Christmas Day**

Example: Thanksgiving Day only affects Thursday & Friday customers

COMPOSTING



Backyard composting is a simple method of turning household waste into valuable fertilizer and organic soil for your garden. Understanding the composting process is an important first step. All composting requires three basic ingredients:

- **Browns** - Including materials such as dead leaves and small branches (provides carbon)
- **Greens** - Including materials such as grass clippings, fruit and vegetable scraps and coffee grounds (provides nitrogen)
- **Water** - (provides moisture to help breakdown the organic matter)

It's important for compost development to have the right amount of greens, browns and water.

The following is a commonly-used method:

- 1. Put your compost pile or bin in a shady spot near a water source.
- 2. To start the composting process you will need 50% green materials and 50% brown materials cut into pieces no larger than 1" in size. Mix the materials and add water every 7-10 days.
- 3. After your compost pile is established, add brown materials and green materials as you collect them. Bury fruits and vegetable matter under 10 inches of compost material. Be sure to moisten materials as they are added.

To aid the process, you can cover the compost pile with a tarp to keep it moist. Turning your compost pile periodically also aids the composting process.

Composting is a naturally-occurring process and even with a minimal amount of attention, you can have wonderful results.